

Victorian Recycled Water Plant

This Victorian Recycled Water Plant is located in Connewarre and provides high quality recycled water for residential, industrial, agricultural and community uses. The precinct is also home to the existing water reclamation facility and bio solids drying plant. The plant supplies high quality Class A and consistent quality Class C recycled water for a range of customers and uses.

To meet growing demand, the site was to be expanded. Treadwell was selected to aid in the design and supply the necessary SureLine® odour control covers, supported by ArchitEX™ structural profiles, as a solution to the challenges the project posed.

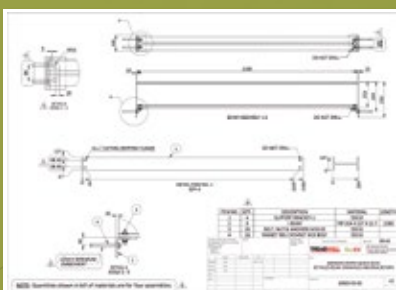
Project Challenges

- A high live loading of 5Kpa was specified and a maximum deflection of 7mm (at 5Kpa) was required.
- The replacement FRP covers had to be manufactured to suit the specific sizes to match the existing structures.
- Exposure to the corrosive wastewater environment was also a concern.
- Maintenance of structure over time was required to ensure the least amount of time, effort and cost in this remote area.
- Being large structures, there was concern that these stacks might affect radio frequencies.
- Electrical conductivity of these structures was also deemed to be a safety hazard.

PROJECT INFORMATION

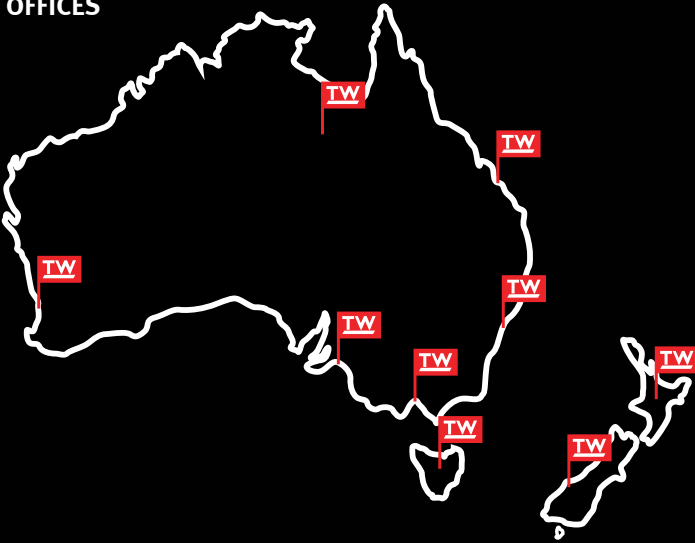
Project Category:	Wastewater recycling plant extension
Scope of Work:	New inlet works
Treadwell Products:	SureLine® Odour Control Covers ArchitEX™ Structural Profiles
Value:	\$160,000

Treadwell Solution:



- 1 Treadwell's EcoEX™ SureLine® were designed and engineered to meet the deflection and live load requirements as well as customised to suit the sizes of the existing structures.
- 2 Durable and corrosion resistant FRP was chosen as the material of choice to avoid long term environmental issues
- 3 Given the nature of FRP, any system utilising it is virtually maintenance free, thus keeping maintenance costs as low as possible.
- 4 FRP is transparent to radio frequency transmission and is non-conductive in nature. This makes the material ideal for applications that need to avoid electrical currents and radio frequency.

OFFICES



ABOUT TREADWELL

At Treadwell Group, our core business divisions have been developed utilising the latest fibreglass reinforced plastic (FRP) technology. With constant innovation and evolution of our offerings, we grow in competence with each experience in delivering unparalleled solutions to a diversified index of industries which include the water and wastewater, mining, oil and gas, public infrastructure and marine sectors. The progression of our products has been focused on ensuring extended design life in varied applications, enabling us to support our continuing commitment to satisfy and add value to our client's endeavours.

Australia

▶ **ADELAIDE (HEAD OFFICE)**

58 Deeds Road
NORTH PLYMPTON SA 5037

Distribution Centres

(Strictly by appointment only)

▶ SYDNEY

2 Coal Pier Road,
Banksmeadow, NSW 2109

▶ MELBOURNE

107 Gateway Boulevard, Epping,
VIC 3076

▶ BRISBANE

4 Howard Smith Drive,
Port of Brisbane, QLD 4178

▶ PERTH

1179 Abernethy Road,
Hazelmere, WA 6055

▶ DARWIN

8 College Road, Berrimah,
NT 0828

▶ HOBART

41 Evans Street, Hobart,
TAS 7000

▶ BURNIE

8 River Road, Wivenhoe,
TAS 7320

New Zealand

Distribution Centres

(Strictly by appointment only)

▶ AUCKLAND

12 Southdown Lane,
Penrose, Auckland 1061

▶ CHRISTCHURCH

31 Baigent Way, Middleton,
Christchurch 8024

Australia

P 1800 246 800
F 1300 763 521

sales@treadwellgroup.com.au
treadwellgroup.com.au

New Zealand

P 0800 246 600
F 0800 244 600

sales@treadwellgroup.co.nz
treadwellgroup.co.nz