

## Solar Salt Production Site Winch Tower & Bridge

Particular attention had to be paid to the extremely corrosive environment the winch tower would sit in – this meant that the majority of conventional materials would be eliminated for selection.

Our client’s engineering team worked in close conjunction with our FRP design and development personnel throughout the whole project to build a lightweight, corrosion resistant and cyclone rated structure that was capable of supporting a heavy duty winch with a S.W.L. of 5 tonnes. The resulting construction consisted of all members made of fibreglass, joined together using 316 grade stainless steel bracketry.

As it was necessary to have personnel access on the winch, a bridge section was developed to span the 7 metres between a bank of earth and the tower. GratEX® was used to make certain that all personnel accessing the tower would enjoy safe and secure footing in conjunction with RailEX®, Treadwell’s FRP hand railing system.

The structure was fully trial assembled and then partly dismantled and packed into modules to be delivered on time in full.

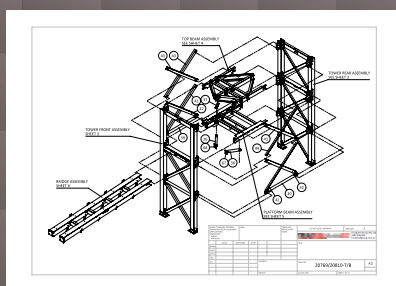
### Project Challenges

- Significant corrosion issues due to the environment and exposure. A structure made from an alternative material was needed to ensure extended design life
- Weight restrictions was an issue given the allowable load on sensitive ground.
- Cyclone prone region of Western Australia.
- Stringent structural specifications to support certain weights.
- Remote region which hampers logistics and installation.
- Reduce the need for maintenance to focus on production.

### PROJECT INFORMATION

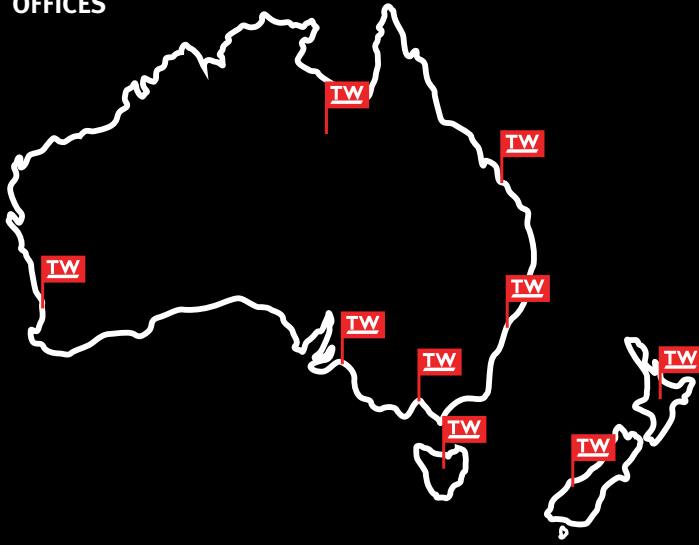
Project Category:	ArchitEX™ structure
Scope of Work:	Winch tower at solar salt production facility
Treadwell Products:	ArchitEX™ FRP profiles GratEX® FRP grating RailEX® FRP handrails
Total Project Value:	\$150,000

### Treadwell Solution:



- 1 ArchitEX™ FRP columns, beams and other supporting profiles were specified as the skeleton of the structure. GratEX® FRP grating and RailEX® FRP handrail were supplied to provide safe access. Specially formulated resin was categorically determined to withstand the corrosion
- 2 The ArchitEX™ profiles were tested to be cyclone rated.
- 3 Being lightweight and easy to install, FRP is very manageable during construction.
- 4 Given the nature of FRP, any system utilising it is virtually maintenance free.
- 5 FRP is high in strength. Based on the resin formula and engineered design, the structure was capable to support the heavy duty winch.

**OFFICES**



**ABOUT TREADWELL**

At Treadwell Group, our core business divisions have been developed utilising the latest fibreglass reinforced plastic (FRP) technology. With constant innovation and evolution of our offerings, we grow in competence with each experience in delivering unparalleled solutions to a diversified index of industries which include the water and wastewater, mining, oil and gas, public infrastructure, marine sectors. The progression of our products has been focused on ensuring extended design life in varied applications, enabling us to support our continuing commitment to satisfy and add value to our client's endeavours.

**Australia**

**SOUTH AUSTRALIA**

▶ **ADELAIDE (HEAD OFFICE & WAREHOUSE)**

58 DEEDS ROAD  
NORTH PLYMPTON, SA 5037

▶ **STRATHALBYN (FACTORY & WAREHOUSE)**

22 DUNREATH ROAD  
STRATHALBYN, SA 5255

**NEW SOUTH WALES**

▶ **SYDNEY (DISTRIBUTION CENTRE)**

2 COAL PIER ROAD  
BANKSMEADOW, NSW 2109

▶ **SYDNEY (OFFICE)**

LEVEL 6, 10 HERB ELLIOT AVENUE  
SYDNEY OLYMPIC PARK, NSW 2127

▶ **WAGGA(OFFICE)**

BALL PL  
EAST WAGGA WAGGA, NSW 2650

**VICTORIA**

▶ **MELBOURNE (DISTRIBUTION CENTRE)**

107 GATEWAY BOULEVARD  
EPPING, VIC 3076

**QUEENSLAND**

▶ **BRISBANE (DISTRIBUTION CENTRE)**

4 HOWARD SMITH DRIVE  
PORT OF BRISBANE, QLD 4178

**WESTERN AUSTRALIA**

▶ **PERTH (OFFICE & WAREHOUSE)**

4 ELMSFIELD ROAD  
MIDVALE, WA 6056

**TASMANIA**

▶ **BURNIE (DISTRIBUTION CENTRE)**

8 RIVER ROAD  
WIVENHOE, TAS 7320

**New Zealand**

**NORTH ISLAND**

▶ **AUCKLAND (OFFICE)**

40 ONEHUNGA MALL  
ONEHUNGA, AUCKLAND 1061

**SOUTH ISLAND**

▶ **GREYMOUTH (OFFICE)**

10 CHESTERFIELD STREET, BLAKETOWN  
GREYMOUTH 7805

**Australia**

P 1800 246 800      sales@treadwellgroup.com.au  
F 1300 763 521      treadwellgroup.com.au

**New Zealand**

P 0800 246 600      sales@treadwellgroup.co.nz  
F 0800 244 600      treadwellgroup.co.nz