

Shute Harbour

Shute Harbour, Queensland – near Arlie Beach, this is a port facility for the transfer of visitors to the Whitsunday Islands and resort destinations. One of the busiest small vessel facilities in Australia, it is also a base for bareboat and charter yacht activity. As part of the Shute Harbour Restoration project, new boat jetties were constructed.

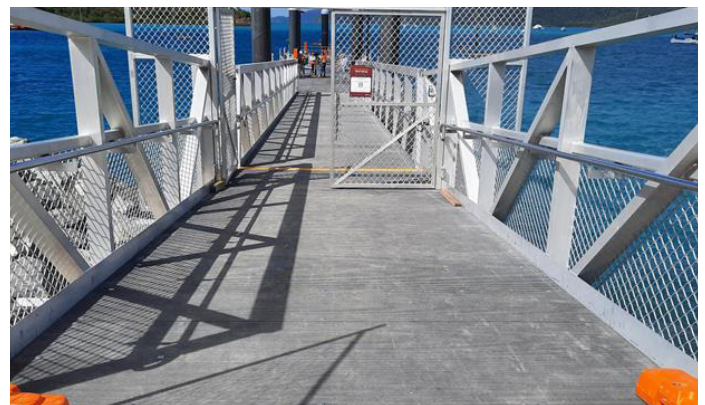
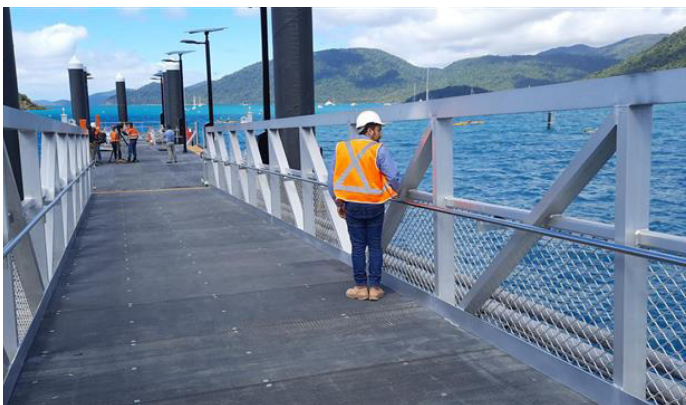
Treadwell was engaged to supply the FRP grating and fixings for these gangways and pontoons.

Project Challenges

- Grating had to withstand the weight loading of forklifts and other trafficable equipment.
- Cyclonic area meant that the grating and attachment design needed to be adequate to withstand wave uplift.
- Architectural requirements were varied and specific colours needed to be achieved.

PROJECT INFORMATION

Project Category:	Recreational Public Infrastructure
Scope of Work:	Supply FRP grating and fixings
Treadwell Products:	EX-Series® GridEX FRP Grating



Treadwell Solution:

- 1 High performance GridEX® FRP grating was specified in building the structure as a preferred solution over traditional materials, due to its high span and load capabilities.
- 2 Treadwell's GridEX® FRP pultruded grating has an anti-slip surface, and provides excellent uni-directional strength, meeting the trafficable loading requirements.
- 3 A combination of GridEX® FRP grating and related fixings creates a structure that is able to withstand high wave loading.
- 4 Treadwell's FRP range of products are easily customised to meet project requirements.
- 5 Given the nature of FRP, any system utilising it is virtually maintenance free, keeping maintenance costs to a minimum.