

## ArchitEX™ Permanent FRP Formwork for Rail Platform Upgrade

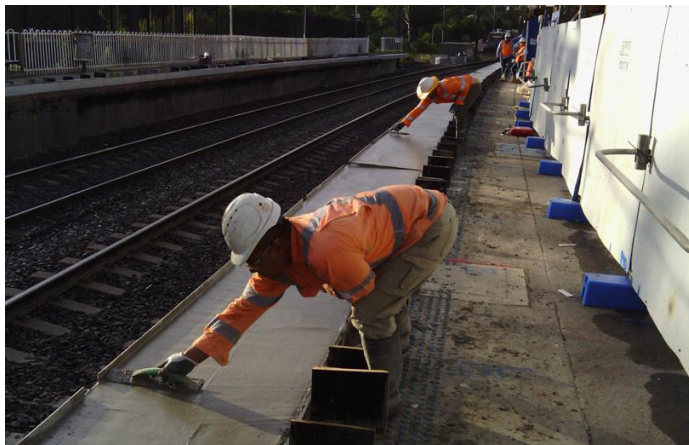
Treadwell was contacted by an NSW Alliance to provide a sacrificial formwork that could be installed on top of the existing concrete. This then needed to be backfilled with concrete. In addition to supplying the FRP formwork itself, Treadwell was also able to provide the engineering certification required for the unequal leg angle to be used for the project.

### Project Challenges

- Formwork had to be non-conductive to ensure safety.
- Structural profile was sacrificial but had to be able to maintain integrity while supporting concrete setting.
- Material had to be non-corrosive.
- Whilst maintaining structural strength, the material also had to be lightweight and easily site adjustable.

### PROJECT INFORMATION

Project Category:	Rail Infrastructure
Scope of Work:	Supply FRP sacrificial formwork
Treadwell Products:	ArchitEX™ FRP Custom Structural Profiles



### Treadwell Solution:

- 1 Treadwell's high performance ArchitEX™ premium grade unequal leg angle profile was utilised.
- 2 Engineered corrosion resistant fibreglass resins.
- 3 Custom manufactured tooling designed fit for purpose to ensure that all concrete is encapsulated.

- 4 FRP is simply fabricated and modified on site. This means there is no need for any hot works permit.
- 5 Being lightweight and easy to install, FRP is very manageable during construction.
- 6 Given the nature of FRP, any system utilising it is virtually maintenance free, keeping maintenance costs to a minimum.