

GratEX® and RailEX® Safety Platform

Our client specialises in the servicing and maintenance of cooling tower systems in both commercial and industrial applications. As part of an air-conditioning project they had, it was decided that structures had to be in place to address safety concerns for staff access.

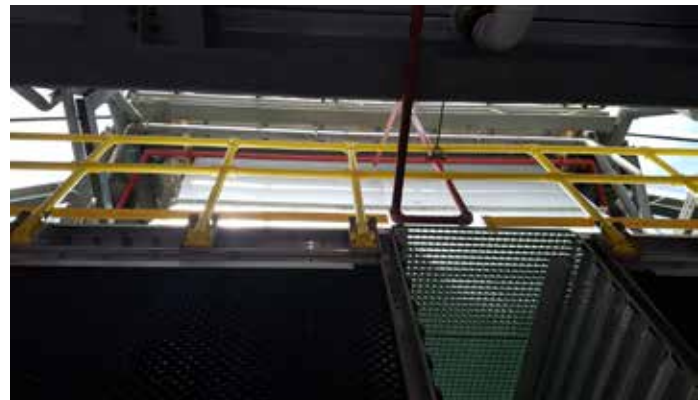
Treadwell was engaged to provide the safety solution of caged ladders, handrails as well as durable decking.

Project Challenges

- Installed as part of a cooling tower structure, the products had to be able to withstand exposure to constant humidity.
- Exposed to external conditions.
- Restricted accessibility for installation.

PROJECT INFORMATION

Project Category:	Cooling tower access
Scope of Work:	Supply FRP products
Treadwell Products:	EX-Series® GratEX® FRP Square Mesh Grating EX-Series® RailEX® ROUND FRP Handrails EX-Series® LadderEX® FRP Ladders



Treadwell Solution:

- 1 As part of the Treadwell EX-Series® range, high performance RailEX® handrails, LadderEX® ladders and GratEX® grating was specified in building the structure as a preferred solution over traditional materials.
- 2 The LadderEX® ladder complete with safety cage is the alternative of choice to metallic cage systems as it is corrosion resistant and provides electrical transparency.
- 3 FRP is simply fabricated and modified on site. This means there is no need for any hot works permit.
- 4 Being lightweight and easy to install, FRP is very manageable during construction.
- 5 Given the nature of FRP, any system utilising it is virtually maintenance free, keeping maintenance costs to a minimum.