

Kings Canyon Viewing Deck

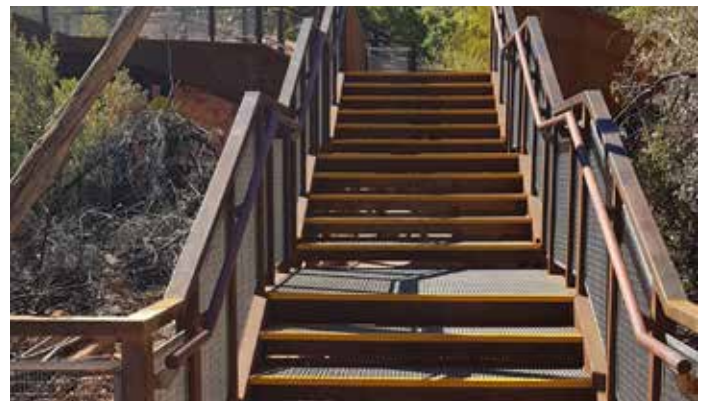
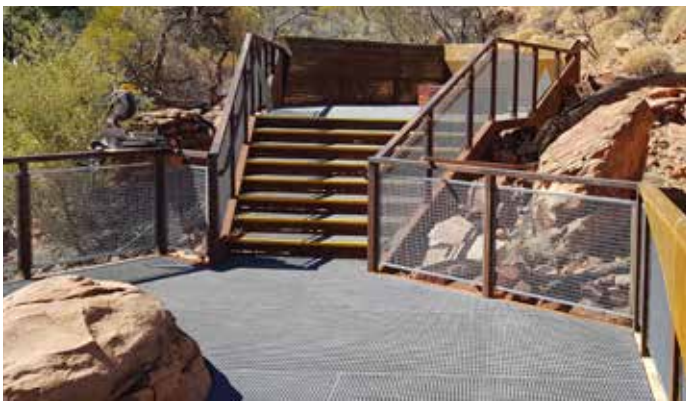
A scenic landscape of rugged ranges, sandstone walls, palm-filled crevices and views that stretch across the desert, Kings Canyon park is truly a breathtaking sight to behold. Featuring activities like birdwatching, walks and hikes, the park is a destination for both Australians and international visitors.

As part of improving accessibility of the park, Treadwell was engaged to build a viewing platform that would allow visitors to experience the grandeur of the park, keeping safety in mind.

Project Challenges

- Remote location meant that any variance on task had to be completed on site.
- Accessibility was a concern as equipment and material had to be maneuvered by hand to the site.
- Outdoor installation meant that progress was dependent on weather conditions.
- Structure had to be able to withstand permanent exposure to desert conditions.

PROJECT INFORMATION	
Project Category:	Recreational Public Infrastructure
Scope of Work:	Supply decking for lookout point
Treadwell Products:	EX-Series® GratEX® FRP Mini Mesh Grating and Stair Treads



Treadwell Solution:

- 1 As part of the Treadwell range, high performance GratEX® FRP Mini Mesh grating was specified as the decking for the structure and providing a long and durable solution over traditional materials.
- 2 The FRP products are lightweight enough to be brought to the site and installed without the need for heavy machinery.
- 3 Decks and stair treads are prefabricated, making installation very quick, despite having to work around weather conditions.
- 4 The structure was engineered to maintain its integrity even when left exposed to desert weather elements.
- 5 FRP is simply fabricated and modified on site. This means there is no need for any hot works permit.
- 6 Given the nature of FRP, any system utilising it is virtually maintenance free, keeping maintenance costs to a minimum.