

## Safe access to whitewater rapids

A whitewater excursion is a great way to view the splendor of natural beauty that Tasmania has to offer. The Mersey White Water Forest Reserve offers a range of paddling activities from racing, freestyle and recreational kayakers, rafters, school education groups, commercial rafting companies, and rescue training courses.

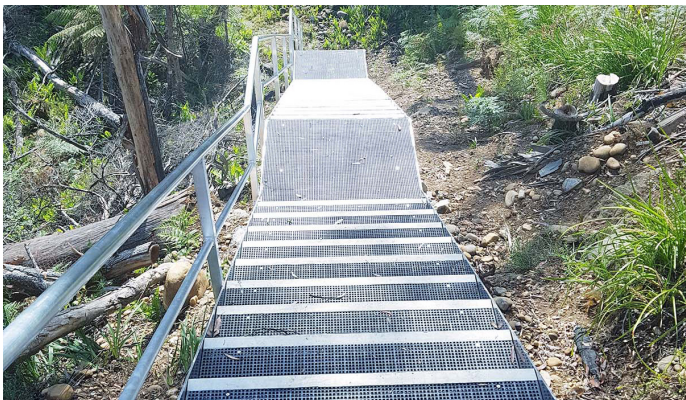
To accommodate the groups visiting the reserve, it was decided that new infrastructure had to be installed to provide safe access, while also protecting the natural environment. Part of the plans included a new bridge and staircase. Treadwell was engaged to supply the grating and stair treads.

### Project Challenges

- Installation was on challenging terrain; the material had to be lightweight to be easily managed.
- Installation was dependent on weather.
- Material had to have fire retardant properties as an added safety feature, being exposed to Australian summers.

### PROJECT INFORMATION

Project Category:	Recreational Public Infrastructure
Scope of Work:	Supply GratEX® panels and stair treads
Treadwell Products:	EX-Series® GratEX® FRP Micro Mesh Grating & Stair Treads



### Treadwell Solution:

**1** The depth of GratEX® stair treads can be customised to accommodate stair landings.

**2** Treadwell's FRP products are lightweight yet durable, and very easy to manage for quick installations.

**3** GratEX® FRP Micro Mesh grating panels and stair treads are designed to be corrosion resistant, anti-slip and constructed with fire retardant additives, making it ideal for this outdoor application

**4** FRP is simply fabricated and modified on site. This means there is no need for any hot works permit.

**5** Given the nature of FRP, any system utilising it is virtually maintenance free, keeping maintenance costs to a minimum.