

## Sydney Opera House Plant Room

An iconic symbol of the Sydney skyline, the Sydney Opera House is an instantly recognisable landmark. Construction was expected to take four years, it was finally completed in 1973 – 14 years later – and involved 10,000 construction workers. Beneath the glitz and glamour of this structure lies an intricate network of corridors and rooms for performers and employees.

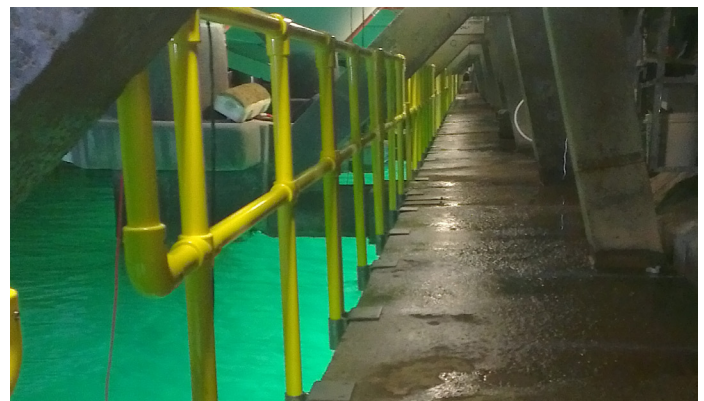
One of these key hidden rooms, is the plant room that houses operational machinery. To enhance workers' safety, it was deemed necessary for handrails to be installed. Treadwell was engaged to supply these handrails.

### Project Challenges

- Handrails needed to be removable so that equipment could be easily maneuvered into position when required.
- Being in an enclosed area with high moisture content, the selected material had to be corrosion resistant.
- Being installed in a confined space, there was space and accessibility constraints to contend with.

### PROJECT INFORMATION

Project Category:	Safety handrails
Scope of Work:	Supply FRP Handrails
Treadwell Products:	EX-Series® RailEX® ROUND FRP handrails



### Treadwell Solution:

- 1 RailEX® FRP handrails are constructed from specially formulated resins with corrosion resistant characteristics.
- 2 RailEX® FRP handrails are lightweight and can be lifted and set in place by hand, eliminating the need for heavy equipment.
- 3 RailEX® is the choice alternative to metallic handrails and offers electrical transparency, while being non-conductive in nature.

- 4 FRP is simply fabricated and modified on site. This means there is no need for any hot works permit.
- 5 Being lightweight and easy to install, FRP is very manageable during construction.