

Marine Emergency Response Provider

This company specialises in emergency response, salvage, wreck removal and environmental care services across the globe at a moment's notice. Responding from strategically located Emergency Response centers in Rotterdam, Houston, Cape Town and Singapore, they provide 24/7 response worldwide.

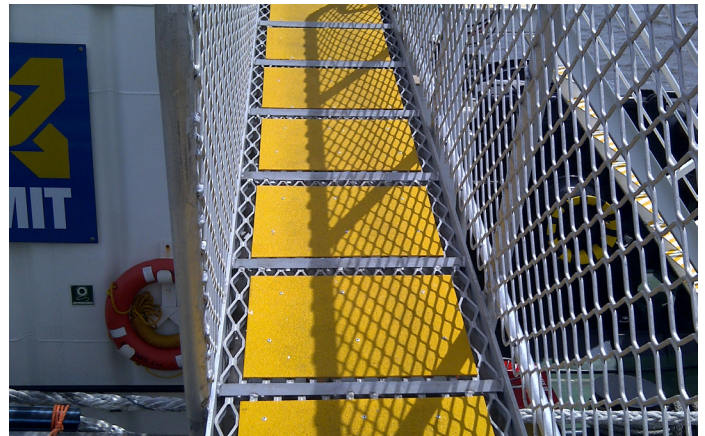
Treadwell was engaged to supply anti-slip decking for their ramps to ensure optimal safety for their staff.

Project Challenges

- Material had to be able to withstand heavy duty traffic.
- Material had to maintain its anti-slip properties in extreme conditions.
- The decking would be exposed to the marine environment and had to be resistant to corrosion.

PROJECT INFORMATION

Project Category:	Marine Safety
Scope of Work:	Supply FRP decking
Treadwell Products:	SAFE-SERIES™ DeckSAFE® FRP decking



Treadwell Solution:

- 1 Treadwell's DeckSAFE® FRP is constructed from premium resins and heavy-duty grit to reduce the hazards associated with extreme oil and wet conditions.
- 2 DeckSAFE® FRP is designed to eliminate the risks of trips, slips and falls in the work place.
- 3 DeckSAFE® FRP colours can also be customised based on the application.

- 4 Treadwell's FRP products feature UV inhibitors, fire retardant additives and corrosion resistant properties.
- 5 FRP is simply fabricated and modified on site. This means there is no need for any hot works permit.
- 6 Being lightweight and easy to install, FRP is very manageable during construction.
- 7 Given the nature of FRP, any system utilising it is virtually maintenance free, keeping maintenance costs to a minimum.