

Martin Place Temporary Walkway

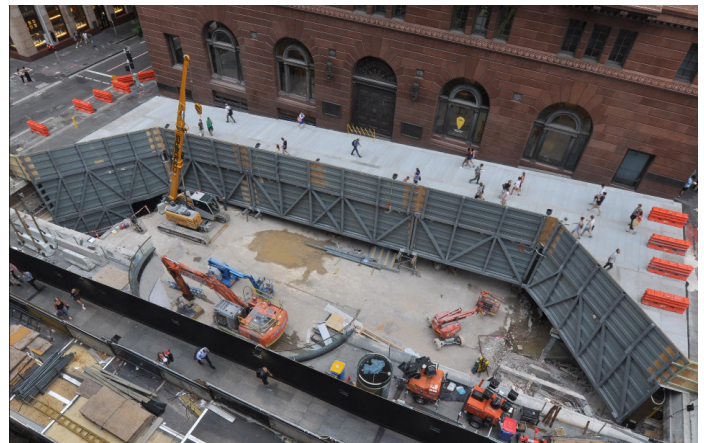
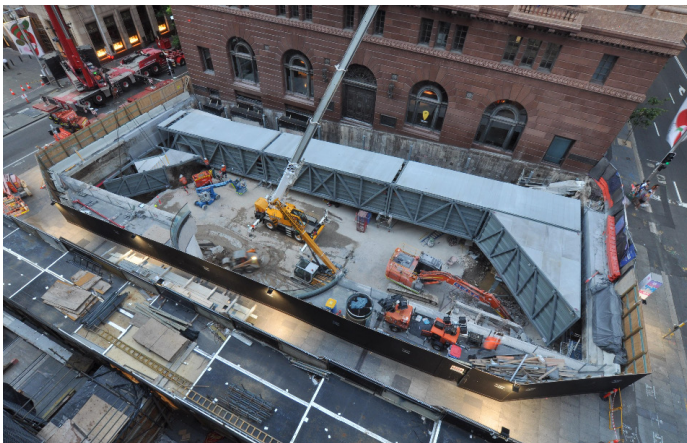
Treadwell was contacted to assist with providing a product that could be used as a lightweight anti-slip solution as a walking surface on the temporary walkway gantry at Martin Place Sydney. The walkway gantry runs between Elizabeth St. and Castlereagh St. To date, it has been installed for over 12 months and has a daily pedestrian traffic volume exceeding 36,000 people.

Project Challenges

- The material was required to be lightweight and easily site adjustable.
- Needed to have an acceptable anti-slip surface that met the requirements of a P5 rating.
- It had to be non-corrosive and non-conductive.

PROJECT INFORMATION

Project Category:	Rail Infrastructure
Scope of Work:	Supply anti-slip, lightweight walkway access
Treadwell Products:	EcoEX™ SureLine® Heavy Duty FRP Panels



Treadwell Solution:

- 1 Treadwell's high performance EcoEX™ SureLine® Heavy Duty FRP Panels are manufactured from premium grade, corrosion-resistant fibreglass resins.
- 2 The panels for this project were designed and customized to meet live load requirements.
- 3 FRP is simply fabricated and modified on site. This means there is no need for any hot works permit.

- 4 Being lightweight and easy to install, FRP is very manageable during construction.
- 5 Given the nature of FRP, any system utilising it is virtually maintenance free, thus keeping maintenance costs as low as possible.