

Wai Ariki Hot Springs & Spa

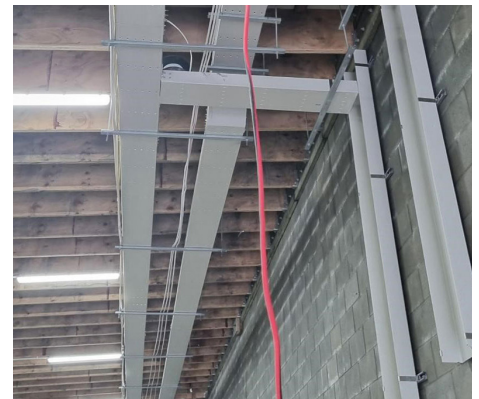
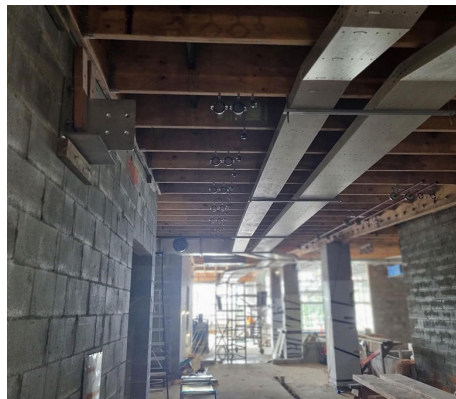
Rotorua, New Zealand – Situated along Lake Rotorua, the Wai Ariki Hot Springs and Spa looks to reset the standard for geothermal mineral wellness experiences. Set to open early 2023, this spa aims to deliver health and wellness experiences infused with authentic Māori culture to create rejuvenating experiences to remember and share. As part of the development, Treadwell was engaged to supply our FRP cable management system.

Project Challenges

- Corrosive geothermal conditions.
- Trays had to span a long length, without needing support at short intervals.
- Product had to be able to be installed without heavy machinery.

PROJECT INFORMATION

Project Category:	Cable Management
Scope of Work:	Supply FRP cable management system
Treadwell Products:	EXduro™ FRP Cable Ladder & Tray



Treadwell Solution:

- 1 EXduro™ FRP Cable Ladders & Trays are corrosion resistant, which make it ideal for this mineral rich environment.
- 2 EXduro™ FRP Cable Ladders and Trays are compliant to the NEMA 20C standard. This means that EXduro™ FRP cable ladders offer a cable laying depth of 135mm and a loading weight of 148 kg/m over a 6m span. This saves time and money on installation and materials needed for support structures.
- 3 FRP is simply fabricated and modified on site. This means there is no need for any hot works permit.
- 4 Being lightweight, FRP is easily installed by hand, without the need for heavy machinery.
- 5 FRP has a longer design life than traditional materials, minimising the costs associated with repair and replacement.